

RECEIVED
LARAMIE COUNTY
CHEYENNE, WY.

CERTIFIED LAND CORNER RECORDATION

'88 NOV 9 AM 9 08

DESCRIPTION OF CORNER EVIDENCE FOUND, AND ORIGINAL RECORD (if known)
Found WCCR stone.

1/4 S.24
1/4 S.25
T.17N., R.62W.
6th P.M.

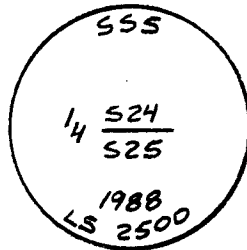
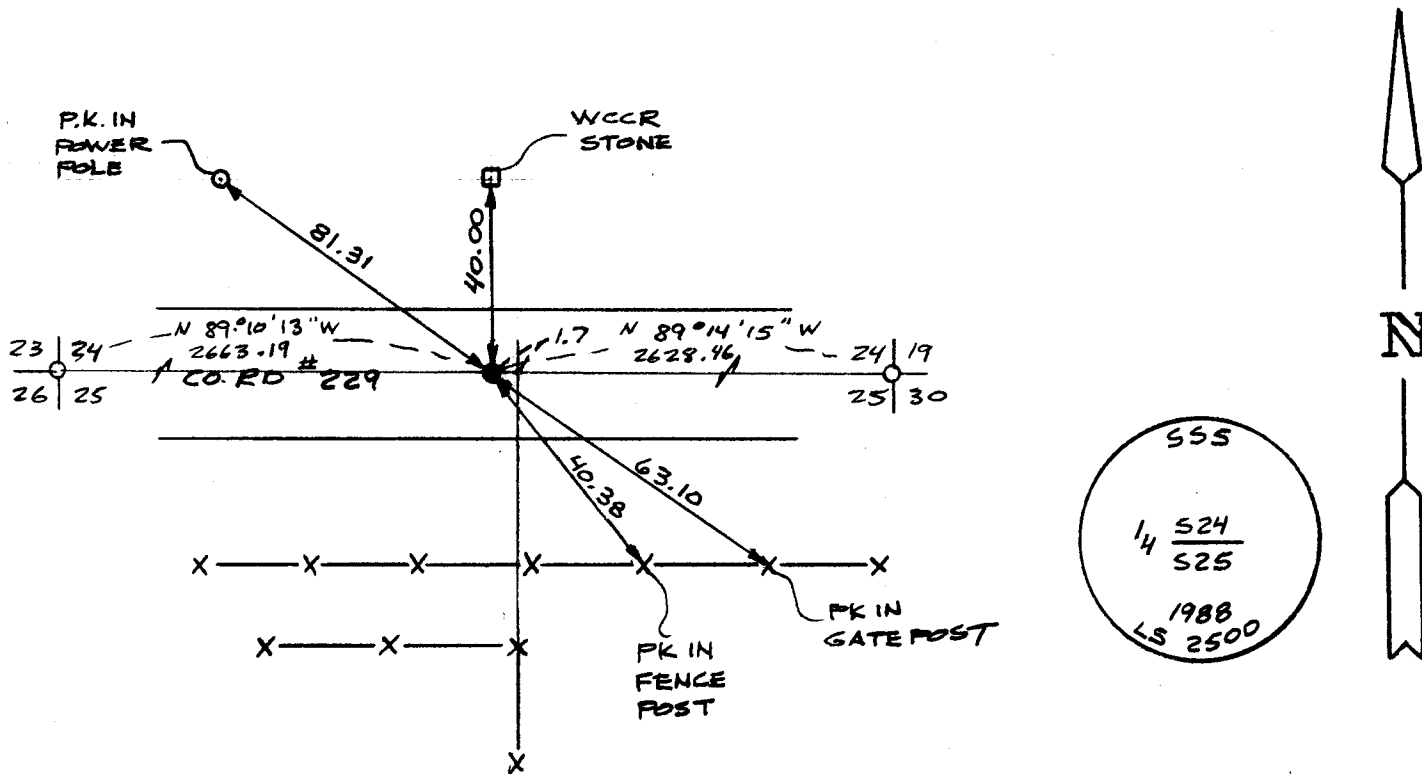
G.L.O. Record: Limestone 16" x 12" x 3" set 10" deep marked 1/4 on West side.
Set by Charles A. Caton & Luther Poland, Deputy Surveyors, July 23, 1873.

DESCRIPTION OF MONUMENT AND ACCESSORIES ESTABLISHED
TO PERPETUATE THE ORIGINAL LOCATION OF THIS CORNER:

At the corner: Set 5/8" rebar with 2" Aluminum Cap 0.05' deep in asphalt stamped as shown below 40.00' South of WCCR stone.

Accessories : See ties below.

SKETCH, WITH COURSE AND DISTANCE TO ADJACENT CORNER IF DETERMINED IN THIS SURVEY.
(May Sketch or Paste Reproduction on Reverse Side.)



I, John A. Steil certify that I have carefully performed or reviewed the work done on the diagrammed corner as reported on this recordation form and approve the same.

John A. Steil
Signature of Surveyor

L.S. 2500
Registration No.

STATE OF WYOMING,
Office of Clerk and Recorder,
County of _____

This "corner record" was filed for record on the _____ day of _____, 19____, was noted on the cross-index plat and is assigned page No. _____, in book No. _____.

County Official			
Cross Index No.	R-23	T. 17N	R. 62W Mer. 6th
_____	_____	_____	Mer.
_____	_____	_____	Mer.
_____	_____	_____	Mer.
_____	_____	_____	Mer.
_____	_____	_____	Mer.
_____	_____	_____	Mer.
_____	_____	_____	Mer.